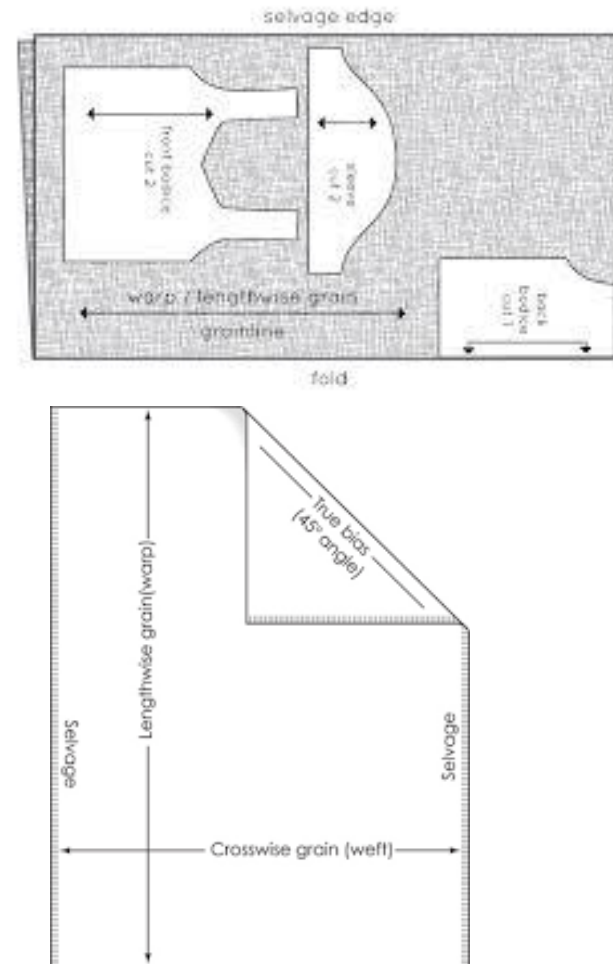


B.A II
HOME SCIENCE
Clothing & textile
Practical terms and definitions

GRAIN LINE

- Shows the direction of fabric layout.
- Straight grain Runs parallel to warp fibers
- Cross grain is parallel to weft yarns.
- Marked with a straight line with arrow on both sides.
- (Yeh arrow ki madad se darshaya jata hai)
-
- (kapda kis disha me rakh k kata gya hai , grain line banane se yeh pata chalta hai)



SELVEDGE/ SELVAGE

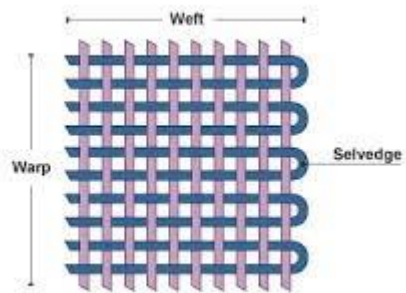
- ▶ Runs parallel to fabric length.
- ▶ Prevents raveling.
- ▶ Add strength to fabric .



IMPORTANT TERMS



yarns



Warp

- ▶ vertical set of yarns.
- ▶ Longitudnal or lengthwise direction of yarns

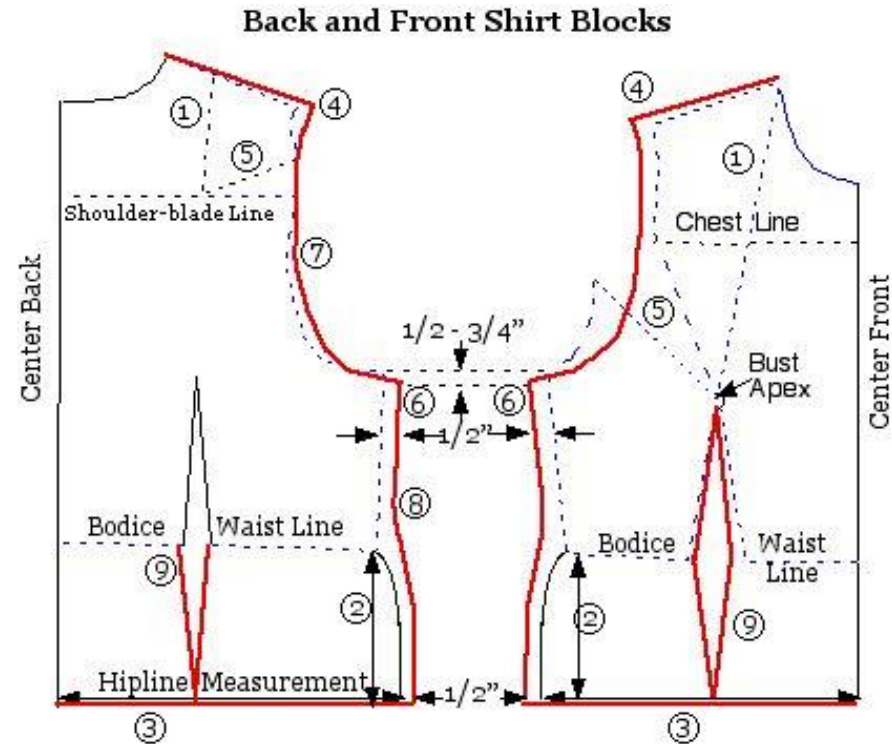
Weft

- ▶ Horizontal direction of yarns.
- ▶ Also called filling yarns.

DRAFTING OF BODICE

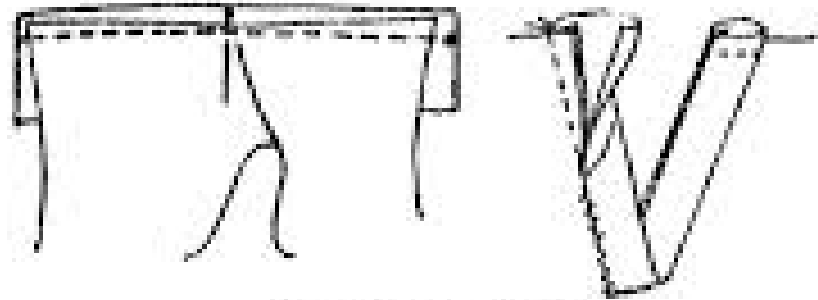
It includes:

- ▶ All Measurements
- ▶ Ease in garment
- ▶ Grain line
- ▶ Marking details
- ▶ No seam allowances



PLACKETS

1. Continuous placket

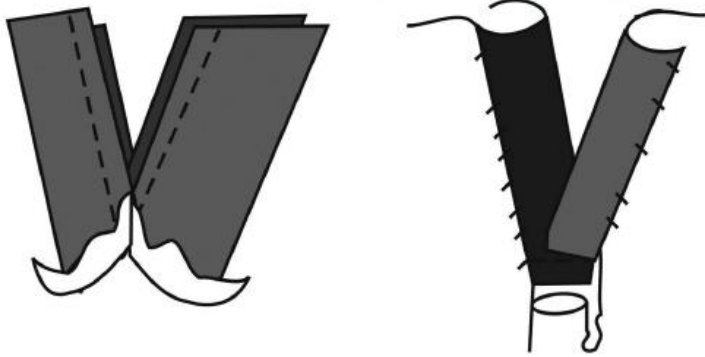


Continuous bound placket

In frock (back)



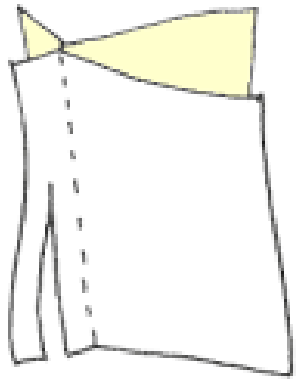
2. Two-piece placket



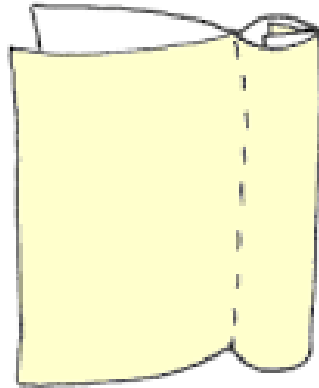
TYPES OF SEAMS

1. *French seam*
2. *Lapped seam*
3. *Run and fell seam*

French seam



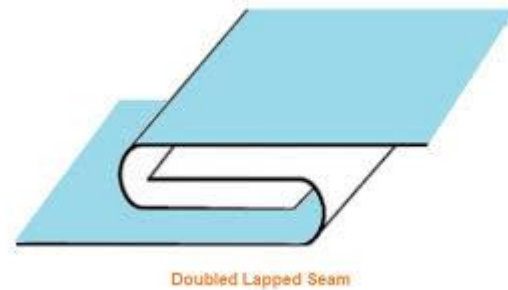
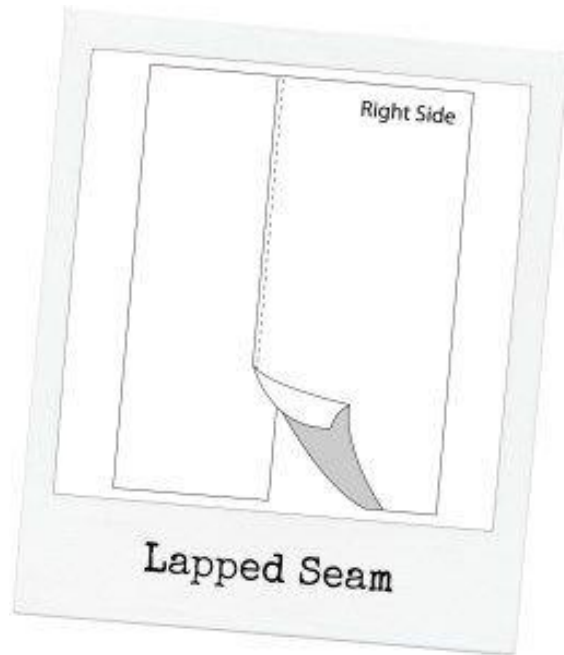
Step 1: Sew wrong sides together and trim seam allowance.



Step 2: Turn so right sides are facing and stitch close to the seam.

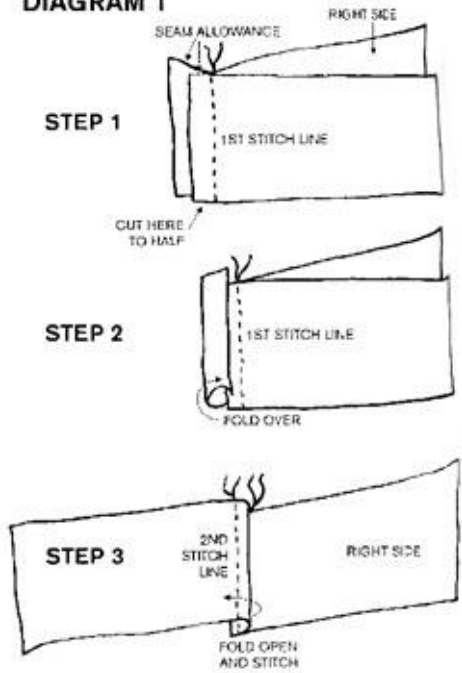


LAPPED SEAM



RUN AND FELL SEAM

DIAGRAM 1



Flat Felled Seams

