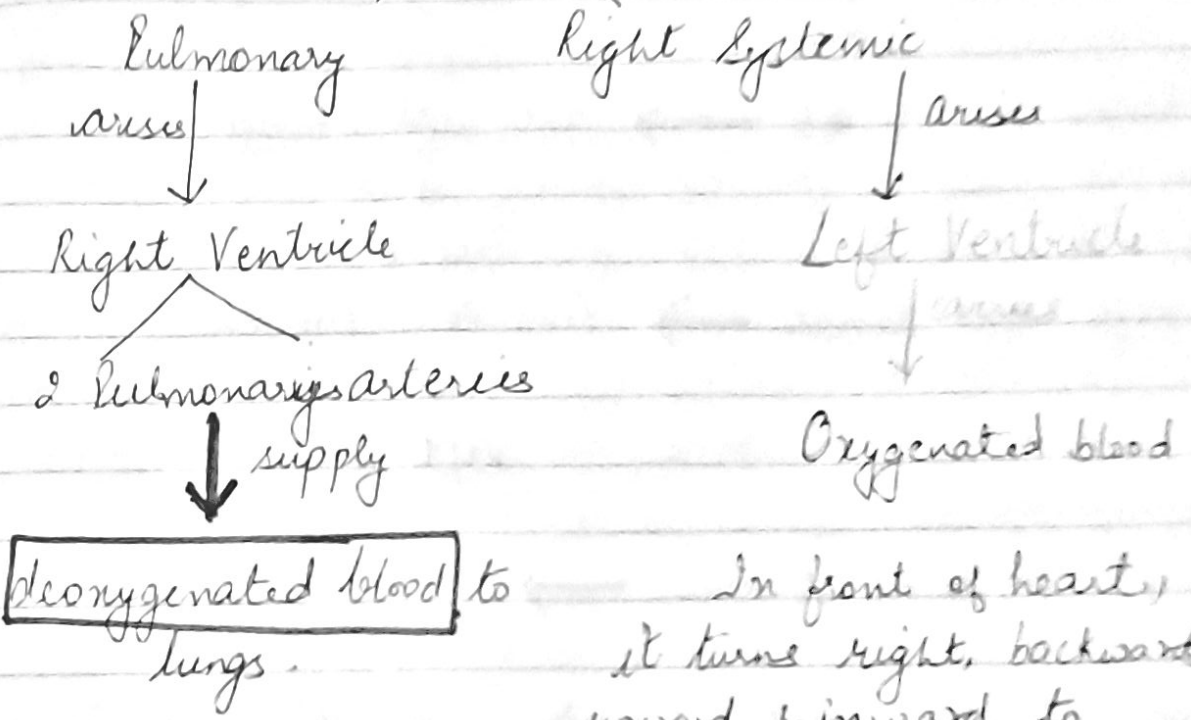


ARTERIAL SYSTEM- PIGEON.

Arterial System Pigeon

Formed of 2 Aortic arches → Distributing vessels



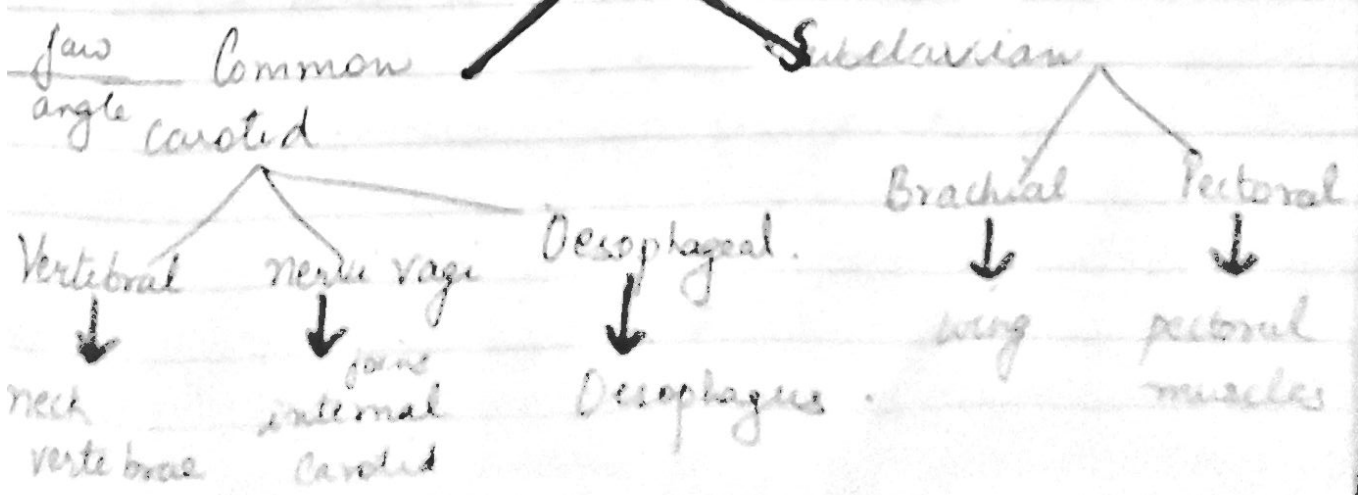
In front of heart, it turns right, backward upward & inward to form

DORSAL AORTA

↓ Divides

1) Coronary Arteries → supply blood to wall of heart

2) Innominate arteries



Branches of Dorsal Aorta

1. Coeliac artery → gizzard, liver, Spleen, duodenum
2. Anterior mesenteric artery → small intestine
3. Anterior renals (1 pair)

↓
Kidneys.

Each ant. renal → Testicular branch

↓

Testis in Male

Left ant. renal → Ovarian branch

↓

Left Ovary

4. Femoral Arteries → Pelvic & thigh muscles

5. Sciatic Arteries → Inner thigh & Shank

6. Iliac " → hip region

7. Posterior Mesenteric artery → Rectum & Cloaca

8. Caudal Artery → Tail

→ This indicates Oxygenated blood supply by arteries